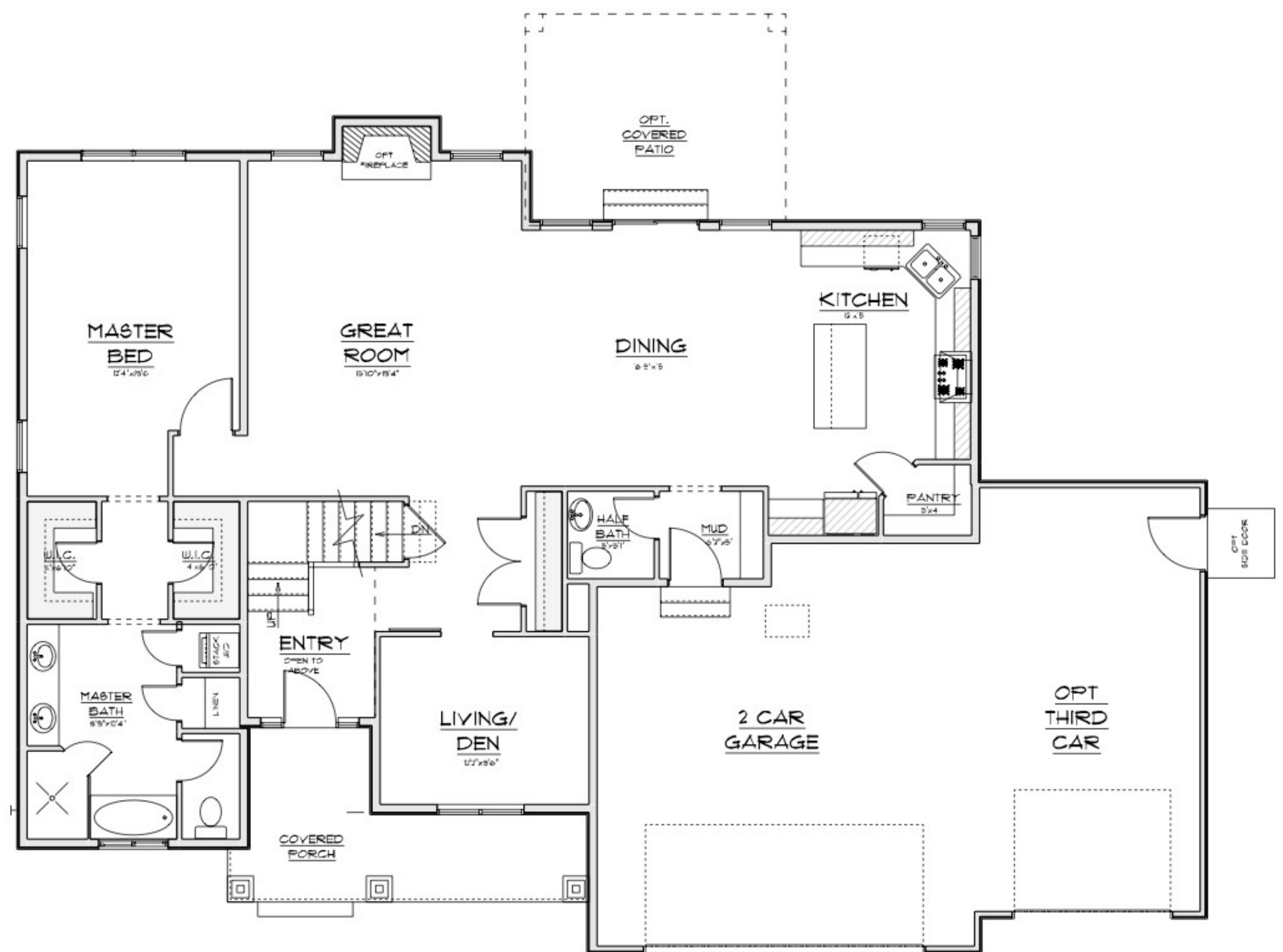
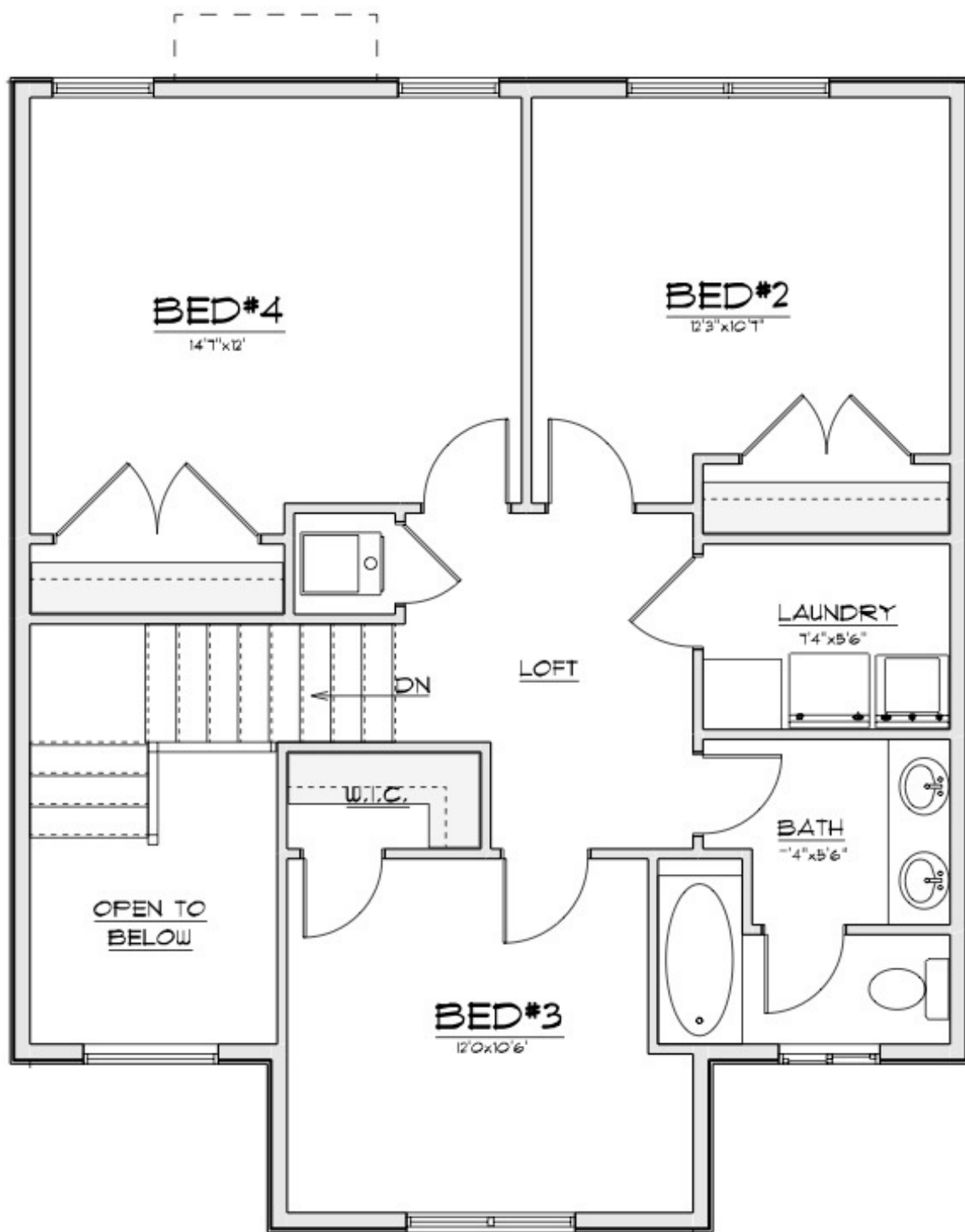




ADDISON

2-Story Master-on-Main 1,567 SF Main Floor 772 SF Upper Floor 1,567 SF Basement 3,906 SF Total
 4 Bedroom 2 1/2 Bath 2 Car Garage 68'-8" Wide x 48'-4" Deep



Because Pepperdign Homes is consistently working to improve our products, policies and plans, items such as square footage, pricing, features, drawings, elevations, size and other options shown may change at any time and may be optional. The Builder reserves the right to change plans, material and policies without prior notice. Square footage, pricing, features, drawings, elevations and size are all approximations used for marketing and illustration purposes only and will vary per plan and lot.

The basement layout illustrated in this flyer is for marketing purposes ONLY.

The design when engineered may be different than shown.